

# MAXX-700

PATIENT  
POSITIONING  
LASER SYSTEM



CEMARLINE



# MAXX-700

## MAXX-700 Laser System Features



- Two Auto Alignment Verification Sensors
- Auto Ambient Light Sensor Adjustment
- Four Automatic Axis Movements
- Macro and Micro Adjustments
- Motor Drives with Precision
- Available in **Green** or **Red**

## Optional Mounting Brackets



CEMARLINE



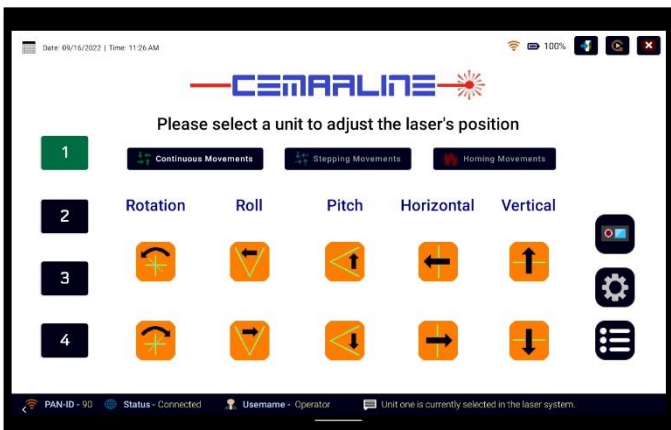
# MAXX-700

## MAXX Tablet Operations

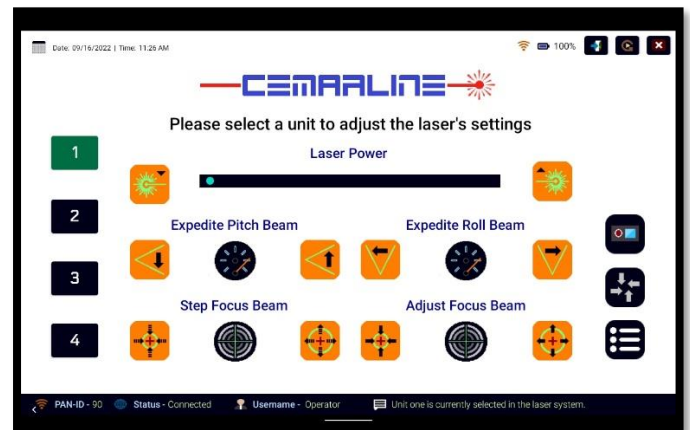


MAXX-700 Application Start Page

- Communicates with MAXX-700, MAXX-1100, and MAXX Combo Set Configurations
- Improved LCD Touch Screen Tablet with Charging Dock and Protective Casing
- Advanced and Up to Date Software
- Durable Wireless Communication
- Updated User Friendly Interfaces
- Extended Battery Capacity
- Complete Functionality



MAXX-700 Laser Position Page



MAXX-700 Laser Settings Page

CEMARLINE



# MAXX-700

## MAXX-700 Laser Specifications

- Four Automatic Axis Movements:
  - X Axis (Horizontal Movement): 20mm (0.8")  
+10mm / -10mm (from Isocenter)
  - Y Axis (Vertical Movement): 20mm (0.8")  
+10mm / -10mm (from Isocenter)
  - Roll Axis (Horizontal Rotation): 10° +5° / -5°
  - Pitch Axis (Vertical Rotation): 6° +3° / -3°
- Movement and Position Sensing Detection
- Crosshair Beam Rotation: 15° +7.5° / -7.5°
- Focus Adjustment: 0.5m - 3.0m (10ft)
- Crosshair Beam Fan Out: 60° Both Axis
- Precision Motor Driven Displacements
- Available Colors: **Green** or **Red**
- Laser Power Adjustment: < 1mW
- Maximum Line Width @ 3m (10'): < 1.0mm (0.04")
- Tablet Can Communicate With 4 Lasers Each Room
- Operating Temperature: 5°C - 35°C (40°F - 95°F)
- Power Requirements: 100V AC – 240V AC, 0.8A, 50Hz - 60Hz
- Weight: 2.9kg (6.4 lbs.)
- Dimensions:
  - Length: 260mm (10.24")
  - Width: 116mm (4.5")
  - Height: 94mm (3.7")



### Cemar Electro Inc.

#### Headquarters and International Sales

Location: 1370 55e Avenue, Lachine, Quebec, H8T 3J8, Canada  
Email Address: [cemar@cemarelectro.com](mailto:cemar@cemarelectro.com)  
Telephone Number: 1-514-631-5807

### MIS Healthcare

#### UK Authorized Representative

Location: 26-27 Capitol Park, London, NW9 0EQ, United Kingdom  
Email Address: [abritton@mishealthcare.co.uk](mailto:abritton@mishealthcare.co.uk)  
Telephone Number: 44-208-205-9500

### Cemar Medical Laser SAS

#### EU Authorized Representative

Location: 1 Avenue, Christian Doppler, 77700, France  
Email Address: [philippe.zimmer@cemar-medical-laser.com](mailto:philippe.zimmer@cemar-medical-laser.com)  
Telephone Number: 33-1-6110-5172

